

LED SHUTTLE BEAM kit (2 lights type) No. 1/2

CODE	(YELLOW) 800-1452030	(CLEAR) 800-1452080
APPLICATION	GROM (JC92-1000001 ~ 1199999)	
REMARK	Some of option parts cannot be installed at the same time. If you use genuine option parts such as(grip heater, accessory socket), other optional coupler, it needs to make branch, etc.	

● Thank you for purchasing Kitaco product. Read and understand the instruction before installing.

ATTENTION (MUST READ)

- This product is made for dress up. Do not use for others.
- This product is designed and made exclusive for application vehicle, do not use other models.
Do not modify the way which is not listed or it will cause damage and trouble.
- We are not responsible for violation of law or damages and accidents caused by assembling mistake and improper setting.
- Bolts and nuts may get loosen by engine vibration.
Make sure not to loosen any bolts and nuts before driving.
- This instruction sheet is for the instruction for genuine condition.
※Metal/resin/alumite products get discolored/rust for ages as well as how to use.
Please understand when using.
- ※The lens have individual difference,. This is tolerance, not defective product.
Please understand before installing.

[IMPORTANT] ATTENTION WHEN USING!

- This product may violate the law of the difference of amount of light and light range.
Depending on where to install, it might violate safety standard.
Please use this only for dress up or auxiliary lighting.
- Condensation may occur because of temperature difference.
- This product is not completely waterproof. Please be careful when washing.
If install to a lot of vibration position, this might not work perfectly, in the worst case, it cause of break.
When installing, please do anti-vibration. If you install near engine, vibration and heat might cause of malfunction.
- ※We are not responsible for break because of heat and vibration. Be careful of it.

● WHEN INSTALLED TOGETHER WITH A GRIP HEATER THAT CONSUMES A LOT OF POWER, IT MAY EXCEED THE VEHICLE'S ALLOWABLE POWER CONSUMPTION.

SPECIFICATION

VOLTAGE ; DC12V(AC alternating current cannot be used)/1 light power consumption(2 lights) 10w(20w)/current consumption:0.9A(1.8A)

LIGHTING ; Spot beam

BRIGHTNESS ; MAX 800 lumen / color temperature 6000 kelvin (clear)

HARNESS LENGTH ; about 300mm

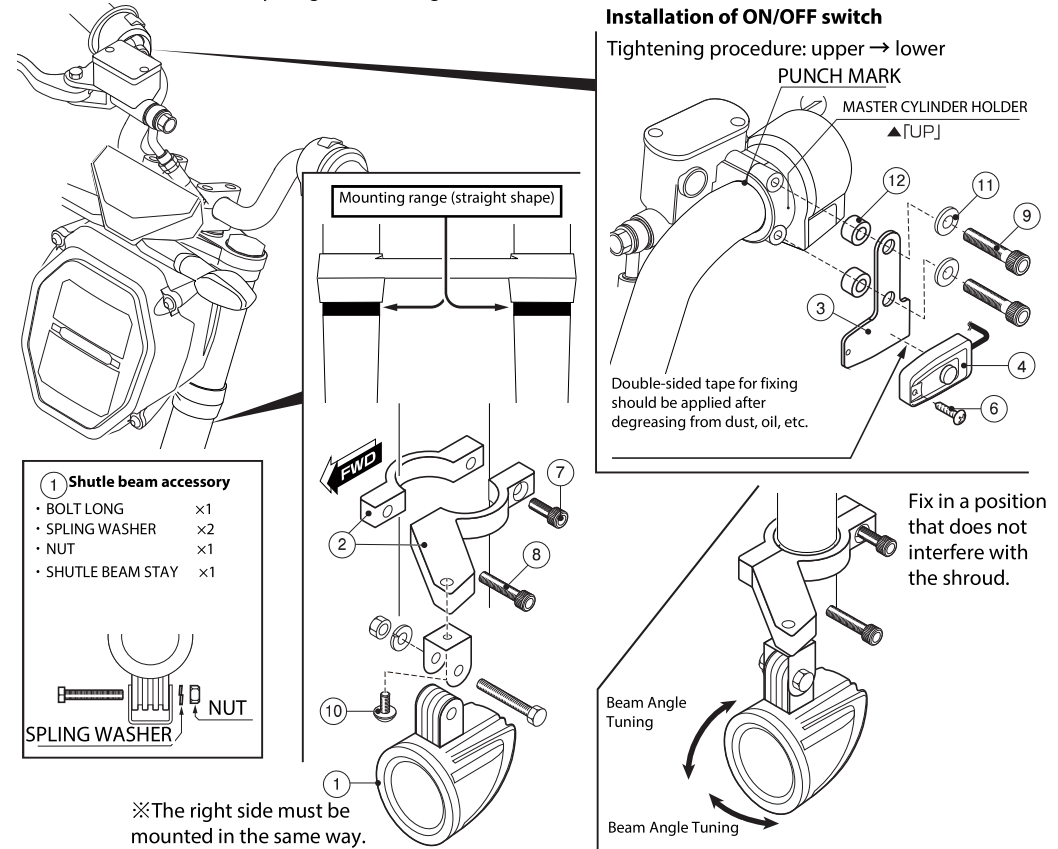
SPECIFICATION ; Aluminum die-casting body / acrylic lens / stay·bolt set

PACKING LIST

Fig	NAME	CODE	YELLOW	CLEAR	TORQUE	
1	LED SHUTTLE BEAM	YELLOW/2 lights type	800-1470301YE	x2	-	
		CLEAR/2 lights type	800-1470301CL	-	x2	
2	LED STAY	GROM FOR FORK	800-1452001	x2	x2	
3	POWER SWITCH STAY	FOR R-SIDE	800-1470402	x1	x1	
4	ON/OFF SWITCH	PUSH type	756-9010030	x1	x1	
5	POWER HARNESS	2 lights LED/GROM	800-1452002	x1	x1	
6	NABE(+) <small>SMALL</small>	M4x10	042-0503010	x1	x1	3N·m / 0.4kgf·m
7	CAP BOLT	M5x15	050-0500015	x2	x2	4.9N·m / 0.5kgf·m
8	CAP BOLT	M5x25	050-0500025	x2	x2	4.9N·m / 0.5kgf·m
9	CAP BOLT	M6x35	060-0500035	x2	x2	10N·m / 1.0kgf·m
10	BUTTON CAP BOLT	M6x15	060-0550015	x2	x2	10N·m / 1.0kgf·m
11	WASHER	6x13x1.0	090-0900006	x2	x2	
12	SPACER COLLAR	6,2x13xL8	093-0800007	x2	x2	
13	TIEWRAP (MS TIE)	100x2.5	700-9200100	x4	x4	
		152x3.5	700-9200152	x4	x4	

HOW TO INSTALL

- Install to genuine head light bracket position, tighten with attached collar and bolt together.
- Adjust the degree of shuttle beam irradiation angle not to obstruct the view of oncoming vehicles.
- The power supply of the shuttle beam is to insert the harness from option 2P coupler inside headlight case.
(Refer to the wiring/connection illustration below.)
- Tighten shuttle beam power supply switch and stay together to left mirror holder.
- Make sure not to loosen anything before riding.



※The right side must be mounted in the same way.

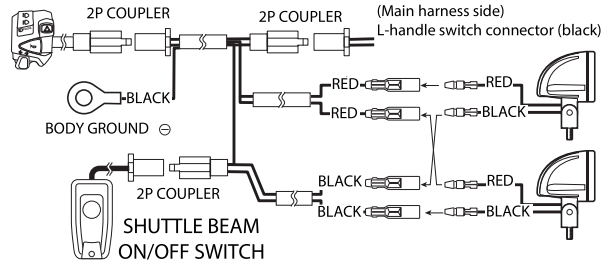
LED SHUTTLE BEAM kit (2 lights type)

No.2/2

CODE (YELLOW) 800-1452030

(CLEAR) 800-1452080

WIRING ILLUSTRATION

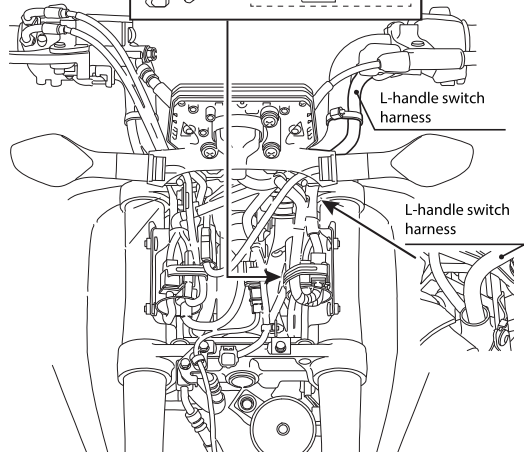
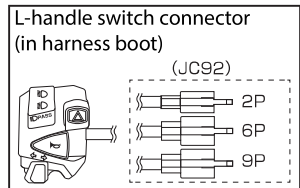


Cautions on harness routing!

Please secure the harness with the supplied cable ties to prevent disconnection and obstruction of steering wheel operation.

WIRING ILLUSTRATION

GROM (JC92)



240415 M-T
<https://www.kitaco.co.jp/>