



TRANSMISSION RELATED PARTS

MONKEY, MONKEY (FI) etc.

CLUTCH LEVER COMP FOR 3 DISC DRIVE UNIT NEWLY RELEASED!!



Option clutch lever comp for Kitaco 3 disc drive unit with smoother shifting when using multi-plate clutch kit.

RECOMMENDED FOR 3 DISC DRIVE UNIT!!

We recommend using Kitaco clutch lever comp, when installing Kitaco 3 disc drive unit / lightweight 3 disc drive unit as stock lever might leads to difficult shifting.

LIGHTWEIGHT 3 DISC DRIVE UNIT



CODE : 307-1123510 PRICE : ¥8,500
18 : 67 · HIGH GEAR RATIO TYPE
 PRIMARY REDUCTION : 3.722 (N : 4.312)
 LIGHTWEIGHT PRIMARY DRIVEN GEAR (67T) ADAPTED

APPLICATION
 FOR MONKEY TYPE ENGINE (including FI) WITH MANUAL CLUTCH
 Listed on vol.39 of 2019.

CLUTCH LEVER COMP

CODE	PRICE
<u>307-1016113</u>	¥2,200
● EXCLUSIVE O-RING INCLUDED	
APPLICATION ● FOR KITACO MONKEY TYPE 3 DISC DRIVE UNIT	

* O-Ring is exclusive for the product.
 * Replacement O-Ring code : 967-1015004A PRICE : ¥200

3 DISC DRIVE UNIT



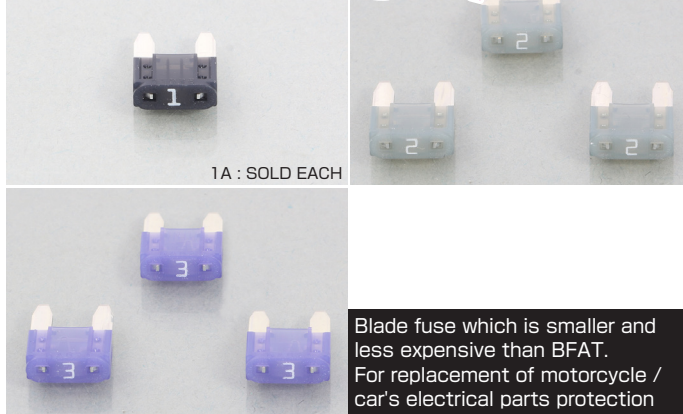
CODE : 307-1017500 PRICE : ¥7,400

16 : 69 · STOCK GEAR RATIO TYPE
 PRIMARY REDUCTION : 4.312

APPLICATION
 FOR MONKEY TYPE ENGINE (including FI) WITH MANUAL CLUTCH

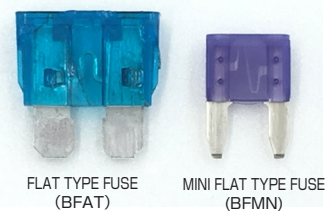
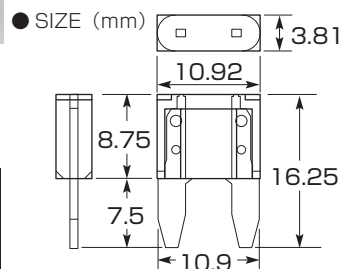
K · CON

MINI FLAT TYPE FUSE! 1A, 2A, 3A NEWLY RELEASED!



MINI FLAT TYPE FUSE (BFMN)

TYPE	CODE	PRICE
1A / BLACK	<u>0900-755-06201</u>	¥200
2A / GRAY	<u>0900-755-06202</u>	
3A / PURPLE	<u>0900-755-06203</u>	
● FOR REPLACEMENT ● RATED VOLTAGE : DC32V ● RATED BRAKING CAPACITY : 1,000A ● RECOMMENDED TEMPERATURE : -40°C ~ 120°C ● 1A : SOLD EACH ● 2A / 3A : 3 IN A SET		



K · PIT

REPLACEMENT LEVER! FOR NMAX, NMAX155 NEWLY RELEASED!!



REPLACEMENT BRAKE LEVER FOR JAPANESE 4 MAKERS
 * SOME LEVERS HAVE DIFFERENT SHAPE & FINISH COMPARED TO GENUINE ONES.

★ REFER TO KITACO WEBSITE FOR DETAILS ★



YAMAHA		BRAKE LEVER			
TYPE	COLOR	CODE	GENUINE NUMBER	APPLICATION	PRICE
YR-24	BLACK	<u>70-525-63240</u>	2DP-H3922-00	NMAX/ NMAX155 (2DS · BV3 · BV4)	¥1,300
YL-25	BLACK	<u>70-525-64250</u>	2DP-H3912-00		