



FOR MORE POWER INCREASE! SUPER HIGH DURABILITY! SPL CAM CHAIN TENSIONER ARM RELEASED!

SPL CAM CHAIN TENSIONER ARM

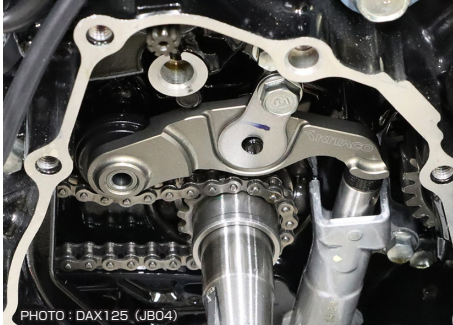


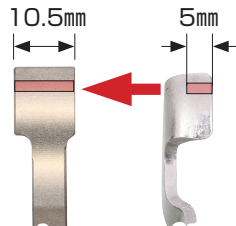
PHOTO : DAX125 (JB04)



Stock cam chain tensioner might be deformed with highly-tuned engine under severe circumstances. Reinforced cam chain tensioner is made from CNC aluminum for reinforcement. In addition, the tensioner push rod contact surface has been widened to prevent deformation and trouble.



"KITACO" is laser marked



The contact surface of the tensioner push rod has been enlarged to improve durability.

APPLICATION

SUPER CUB 110 (JA59), CROSS CUB 110 (JA60), GROM (JC92), MONKEY 125 (JB03/JB05), DAX 125 (JB04/JB06), SUPER CUB C 125 (JA58/JA71), CT 125 · HUNTER CUB (JA65)

REMARKS

○ ARM : ALUMINUM MACHINED ○ HARD ALUMITE FINISH
○ WEIGHT : 31.2g (STOCK : 35.6g) ○ ROLLER AXLE : STEEL

* Stock push rod, cam chain guide roller is usable. L crankcase cover gasket (sold separately) required.

CODE	PRICE
303-1452810	¥7,800

○ GENUINE L CRANK CASE COVER GASKET : 11395-K1M-T01 / 11395-K1M-T02

READS OUT DIAGNOSIS CODE & RESETS THROTTLE OPENING SENSOR!! ECU ERROR CHECK TOOL SET HONDA / 6P COUPLER LINE UP!!

ECU ERROR CHECK TOOL SET



Read out ECU diagnosis code & throttle opening sensor reset. Changes with ON/OFF switch, not by connecting / disconnecting connectors.

APPLICATION

SUPER CUB 110 (JA59), CROSS CUB 110 (JA60), GROM (JC92), MOKEY 125 (JB03/JB05), DAX 125 (JB04/JB06), SUPER CUB C 125 (JA58/JA71), CT 125 · HANTER CUB (JA65) etc.
● FOR HONDA VEHICLE WITH SERVICE CHECK 6P COUPLER (RED)

REMARKS

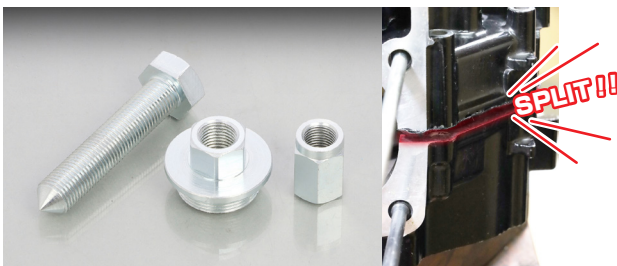
○ SWITCH HARNESS : 500mm

* Refer to Honda service manual for details. * ECU can not be reset.

CODE	PRICE
764-9001200	¥2,500

SEPARATE STUCK CRANKCASE INTO LEFT AND RIGHT HALVES!!

CRANK CASE SEPARATE TOOL



Special tool that is useful for separating stuck crankcase into left and right halves. Left crankcase cover allows for easy separation.
* When dividing, all the bolts and parts are required to be removed.

APPLICATION

GROM (JC61/JC75/JC92), MONKEY 125 (JB02/JB03/JB05), DAX 125 (JB04/JB06), SUPER CUB 50 series (AA06/AA07/AA09), SUPER CUB 110 series (JA07/JA10/JA42/JA44/JA45/JA59/JA60), SUPER CUB C 125 (JA48/JA58/JA71), CT125 · HUNTER CUB (JA55/JA65) etc.

CODE	PRICE
674-1432800	¥4,500



See how to split crankcases here.



BIG BORE RELATED Tune-up item

MAINTENANCE RELATED PARTS