



sbs[®]

GO AHEAD

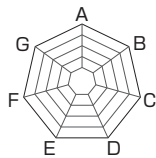


SBS BRAKE PAD

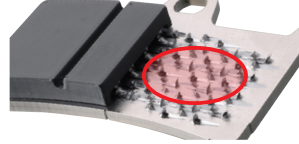
STABLE PERFORMANCE EVEN IN HARSH CONDITION!

● RADAR CHART ●

- A: Cold Initial Braking
- B: Hot Initial Braking
- C: Fade Resistance
- D: Wet Performance
- E: Dry Performance
- F: Wet Abrasion Resistance
- G: Dry Abrasion Resistance



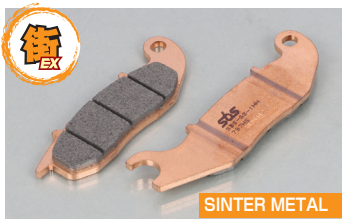
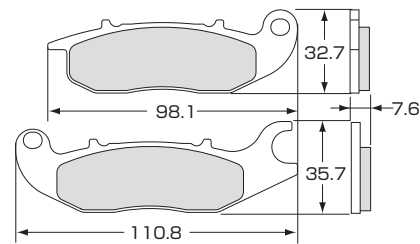
● NRS HOOK ●



The hook-shaped matrix (NRS hook) used on the bonding surface between the lining material and the back plate enables bonding without adhesives, preventing peeling and squealing. This is the only technology in the industry that SBS offers.

SPORTS PERFORMANCE & DURABILITY FOR STREET RIDERS!

SBS BRAKE PAD 797HS



APPLICATION

● FRONT OF FOLLOWING MODEL

HONDA

APE 50 typeD (AC18), GROM (JC61/JC75/JC92), MONKEY 125/ABS (JB02/JB03/JB05), DAX 125 (JB04), CT125 · HUNTER CUB (JA55/65), XL750 TRANSALP (RD16) * 1 etc.

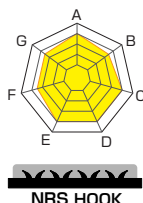
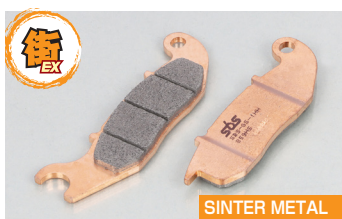
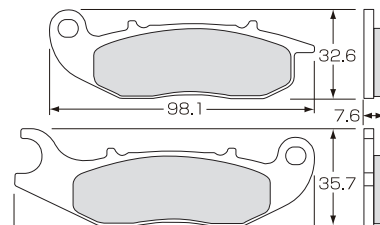
* 1, XL750 TRANSALP (RD16) only fits FRONT RIGHT SIDE. 859HS fits FRONT LEFT SIDE.

FEATURE

FRONT USE STREET

TYPE	CODE	PRICE
797HS	777-0797020	¥4,400

SBS BRAKE PAD 859HS



APPLICATION

● FRONT OF FOLLOWING MODEL

HONDA

CROSS CUB 110 (JA60), SUPER CUB 110-PRO (JA61), PCX HYBRID (JF84), PCX (JK05), PCX E:HEV (JK06), PCX 150ABS (KF30), PCX 160 (KF47), ADV 150 (KF38), ADV 160 (KF54), CRF250L/SP/M (MD38), CRF250L/typeLD/M/RALLY (MD44), CRF250L/RALLY (MD47), XL750 TRANSALP (RD16) * 1 etc.

* 1, XL750 TRANSALP (RD16) only fits FRONT LEFT SIDE. 797HS fits FRONT RIGHT SIDE.

FEATURE

FRONT USE STREET

TYPE	CODE	PRICE
859HS	777-0859020	¥4,400