

# SPEEDOMETER CUB110 with gear position indicator / 140 km/h No.1/2

CODE	752-1439000
APPLICATION	SUPER CUB110 (JA44)

- Thank you for purchasing Kitaco product. Read and understand the instruction before installing.
- Please use as setting manual after installing.
- \*Replacement products are not include instruction sheet. Please keep this safe.

### ATTENTION (MUST READ)

- This product is precision mechanical equipment. Do not apply excessive force. It might cause of break and trouble. Do not modify the way which is not listed or it will cause damage and trouble.
- This product is designed and made exclusive for application model, do not use other models.
- We are not responsible for violation of law or damages and accidents caused by assembling mistake and improper setting.
- Please ask authorized mechanic for assembling and setting. Ask a specialist at specialty shop if you do not understand the role of the surrounding parts.
- This instruction sheet is for the instruction for stock condition.
- Refer to the manufacturer service manual when installation.
- Bolts and nuts may get loosen by engine vibration. Make sure not to loosen any bolts and nuts before driving.

### ATTENTION (MUST READ)

#### ▼HOW TO HANDLE WITH EACH METER

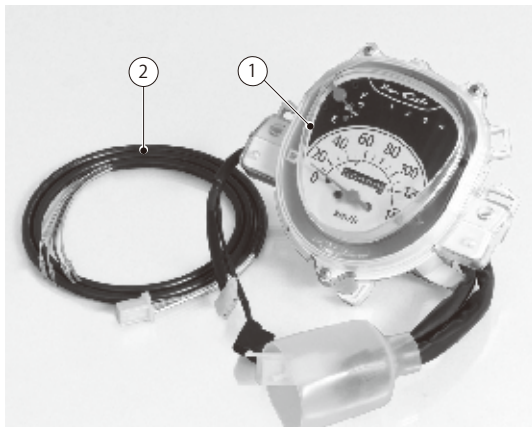
- This product is not perfectly water proof. Riding under the rain, washing, etc may cause of water intrusion. Please avoid as much as you can. Avoid to park in rainy place. High humidity may cause of glass surface fog up.
- This product is precision mechanical equipment. If installing to a lot of vibration place, etc might unable to bring out original performance. In the worst case, it might be break.
- \*Multifunctioned by heat and vibration are not covered by warranty. Be careful of it.
- Do not disassemble. It causes of trouble and break.

### SPEC

MEASUREMENT LIST	MEASUREMENT RANGE	
SPEED	0 ~ 140km/h	
GEAR POSITION INDICATOR	(N)/1/2/3/4	
OTHER	SAME AS STOCK	

### PACKING LIST

FIGURE	NAME	CODE	QTY
1	140km/h SPEEDOMETER comp	752-1439000A	x1
2	GEAR POSITION HARNESS	752-1439002	x1



### HOW TO INSTALL

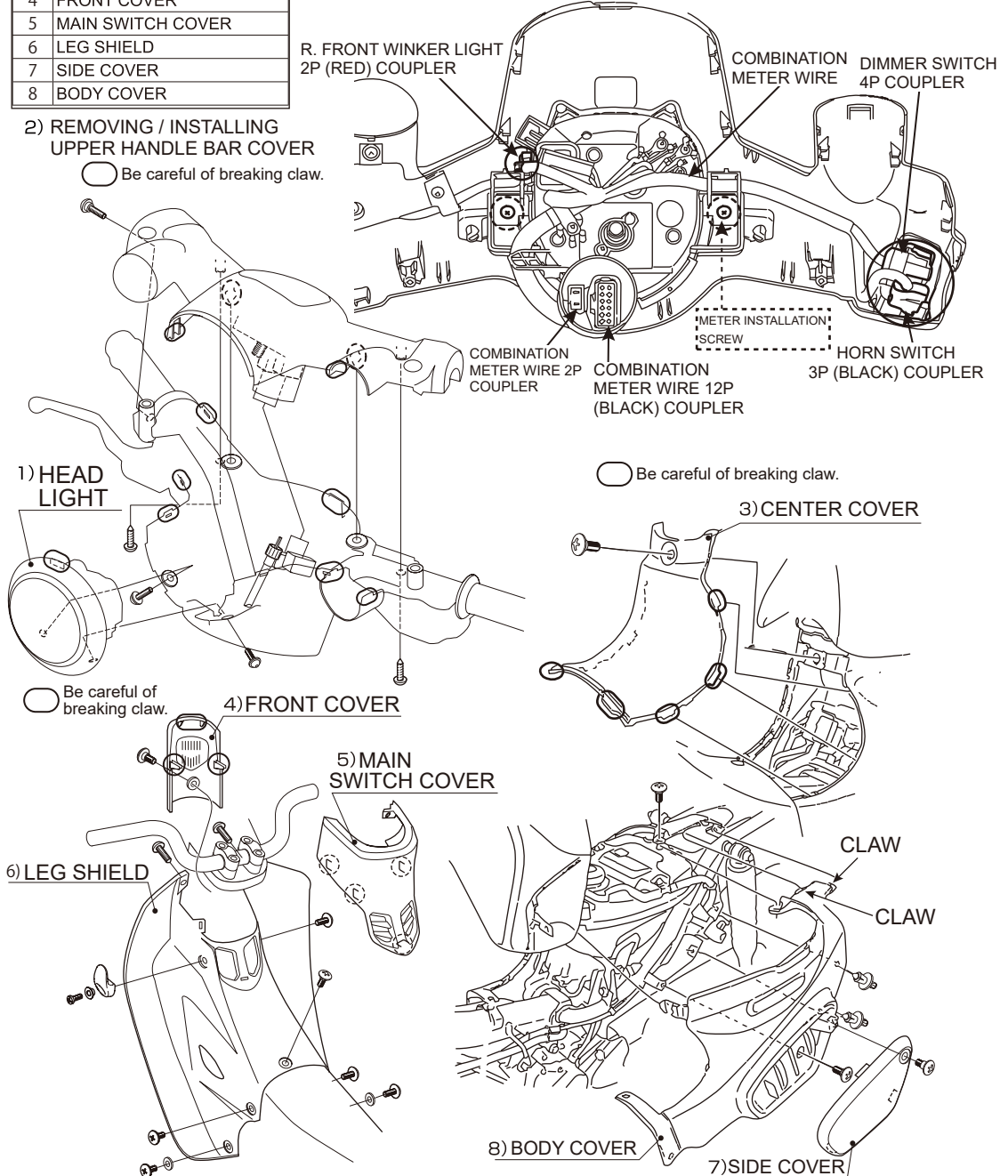
- o Remove outer cowls to install gear position harness. [Refer to No.1 removing / installing outer cowls]
- o Gear position harness passing through along to main frame. [Refer to the No.2]
- o Insert attached gear position harness male terminal to vehicle side gear position switch 9P black coupler. [Refer to the No.2]
- o Change speedometer main unit. Put removed coupler and meter cable back. [Refer to the No.1 combination meter back side illustration]
- o After installing, make sure meter indicator, meter and gauges work correctly.

OUTER COWLS REMOVAL ORDER	
1	↓ HEAD LIGHT
2	UPPER HANDLE BAR COVER
3	CENTER COVER
4	FRONT COVER
5	MAIN SWITCH COVER
6	LEG SHIELD
7	SIDE COVER
8	BODY COVER

### ATTENTION!

- REMOVING / INSTALLING COVERS
- \*Removing / installing outer cowls are required to install this product. Refer to the manufacturer service manual when installation.

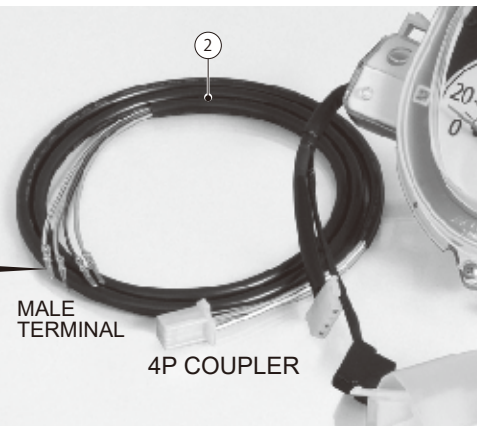
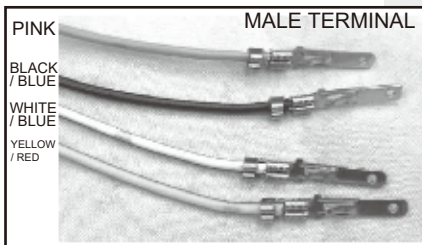
### COMBINATION METER BACK SIDE :



**SPEEDOMETER CUB110 with gear position indicator / 140 km/h No.2/2**

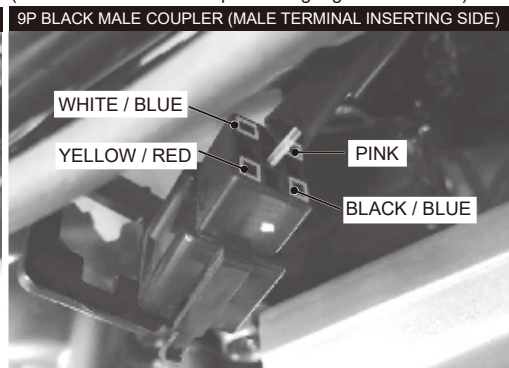
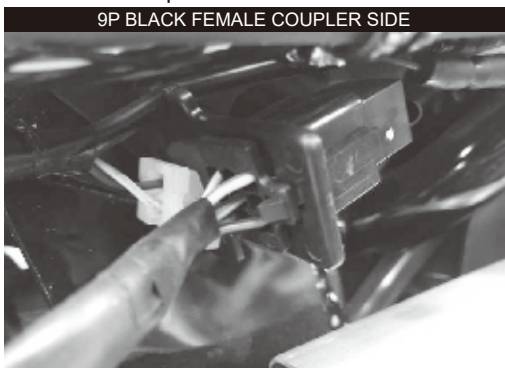
CODE	752-1439000	SUPER CUB110 (JA44)
------	-------------	---------------------

- ② gear position harness passing through as dotted line on wiring illustration.
- Gear position harness 4P coupler passing through the arrow on the illustration.



- Insert attached gear position harness male terminal to vehicle side gear position switch 9P black coupler.

\*Refer to the vehicle side female coupler arrangement, insert ② gear position harness male terminal to same colored harness. (Stock 9P black male coupler has light green / red wire)



**EACH INDICATOR LAMPS**



WINKER FI WARNING LAMP HIGH BEAM NEUTRAL

**GEAR POSITION (1~4SP)**



**WIRING ILLUSTRATION**

