

FENDER LESS KIT NO.1 /2

CODE : 691-1460000

APPLICATION : ADV150 (KF38) /160 (KF54)

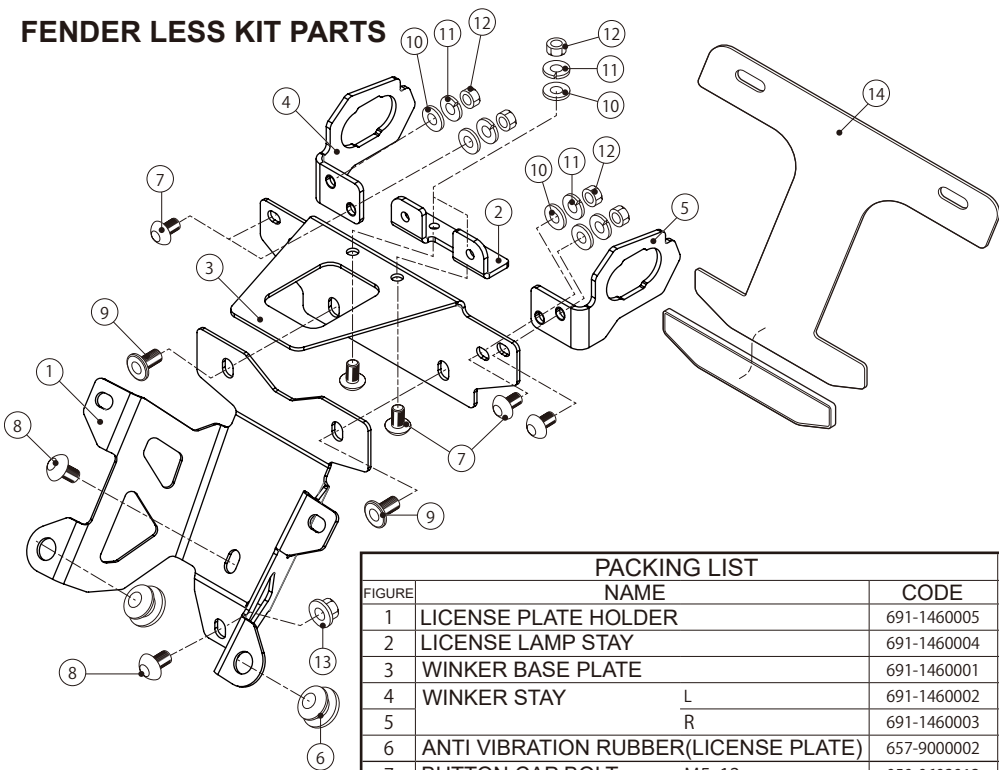
●Thank you for purchasing Kitaco product. Read and understand the instruction before installing.

ATTENTION (MUST READ)

- This instruction sheet is for the instruction for stock condition.
- This product is for dress-up. Do not use for other purposes.
- This product is designed and made exclusive for application models, do not use other models. Do not modify the way which is not listed or it will cause damage and trouble.
- We are not responsible for violation of law or damages and accidents caused by assembling mistake and improper setting.
- Please ask authorized mechanic for assembling and setting. Ask a specialist at specialty shop if you do not understand the role of the surrounding parts.
- Refer to the manufacturer service manual when installation.
- Bolts and nuts may get loosen by engine vibration. Make sure not to loosen any bolts and nuts before driving.

●Do not install sold separately license plate base, etc accessory around license plate and plate holder. It might be over weighted and cause of break. Be careful of it.

FENDER LESS KIT PARTS



PACKING LIST

FIGURE	NAME	CODE	QTY	
1	LICENSE PLATE HOLDER	691-1460005	x1	
2	LICENSE LAMP STAY	691-1460004	x1	
3	WINKER BASE PLATE	691-1460001	x1	
4	WINKER STAY	L	691-1460002	x1
5		R	691-1460003	x1
6	ANTI VIBRATION RUBBER(LICENSE PLATE)	657-9000002	x2	
7	BUTTON CAP BOLT	M5x12	050-0602012	x6
8	BUTTON CAP BOLT	M6x12	060-0602012	x2
9	FLAT BUTTON CAP BOLT	M6x15	060-0590015	x2
10	WASHER	5x12x0.8	090-0650050	x6
11	SPRING WASHER	5mm	091-0505005	x6
12	NUT	5mm	001-0500005	x6
13	FLANGE LOCK NUT	6mm	001-0550006	x1
14	REFLECTOR KIT	(126cc ~)	801-0800300	x1
	REFLECTOR	19x98mm	801-0800003	(x1)

■Installation process is ADV150 (KF38), it is different stock parts of 160 (KF54). Please refer to the sevice manual.

1 STOCK PARTS REMOVAL (REAR FENDER)

- 1-1 Remove tapping screw [fig.A] and 2pcs of trim clip [fig.B] on the back side of rear fender. Then remove inner fender [fig.C] on the back side of rear fender from backwards not to break claw. (Reuse removed trim clip and inner fender.)
- 1-2 Disconnect rear winker and tail lamp connector.



- 1-3 Remove nut for rear fender from back side.



- 1-4 Remove 2pcs of tapping screw for number lamp from backside.



- 1-5 Remove 3pcs bolts [fig.A] for fixing rear fender, then remove rear fender and winker unit from vehicle.



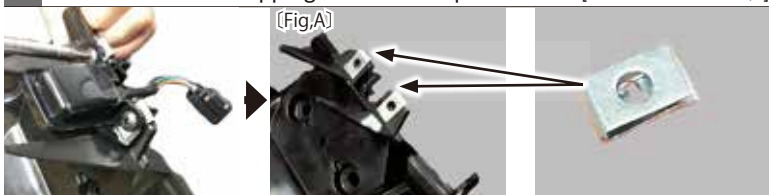
- 1-6 Remove winker from rear fender. Remove hexagon bolt and metallic plate stay [fig.A] for remove winker.



- 1-7 Remove winker base rubber [fig.A] from rear fender, then divide rear fender and license lamp cover. (Rubber has left and right direction. Please note it.)



- 1-8 Remove 2pcs tapping screw for fixing liscense lamp from rear fender, then remove clip nut [fig.A] too. (Be careful not to cut hand by the edge.)
- ※Reuse removed tapping screw and clip nut. [CONTINUE TO NO,2]



200228 Y-N

FENDER LESS KIT NO.2 /2

CODE : 691-1460000

APPLICATION : ADV150 (KF38) /160 (KF54)

2 FENDER LESS KIT INSTALLATION

2-1 Install removed (1-8) clip nut [fig.A] to attached license lamp stay horizontally, then fix license lamp with tapping screw.



2-2 Fix license lamp stay to winker base plate which is attached to kit.



2-3 Fix attached winker stay left and right to stock license lamp cover (resin) with removed (1-7) winker stay rubber. (There is a left and right direction for the rubber. Be careful of it. ※Refer to the 1-7 [fig.A])



2-4 Install winker in the reverse order of removal.



WINKER HARNESS COLOR	
L (ORANGE-GREEN)	R (SKY BLUE-GREEN)

2-5 Install winker base plate to license lamp cover with plate is sandwiched by cover tip guide. [fig.A] (Attention to harness inserting! Refer to the below.)



※Harness layout.

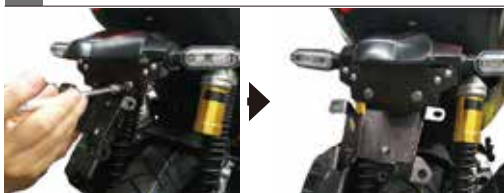
2-6 Fix winker base plate and stay with attached M5x12 button cap bolt.



2-7 Insert harness to frame gap to install winker base plate and license lamp plate to rear fender frame temporarily. (Continue to below.)



2-7 Install winker base plate and license lamp to rear fender frame temporarily (not tighten screw), install license plate holder and tighten temporarily with 2pcs of flat button cap bolts. Tighten license plate holder center button cap bolt M6x12 temporarily to adjust and check all the balance, then tighten 3pcs bolts firmly.



2-8 Install removed (1-4) 2pcs of stock tapping screw.



2-9 Connect tail lamp, winker left and right connector.



2 FENDER LESS KIT INSTALLATION

2-10 Install stock inner fender (rear fender back side). [fig.A] (※There is a claw on forward, insert it to vehicle and install from forward. At that time, be careful of the claw around center.) [fig.B]



※Be careful of breaking claw.

※Be careful of breaking claw.

2-11 Fix stock inner fender and fender less kit below part with M6x12 and flange nut. (※Made from resin part, be careful of breaking caused by over tightening.) [fig.A]

2-12 Install removed 2pcs of stock trim clips to stock inner fender. [fig.B]



2-13 Install anti vibration rubber to license plate holder left and right. (※Be careful of direction.)



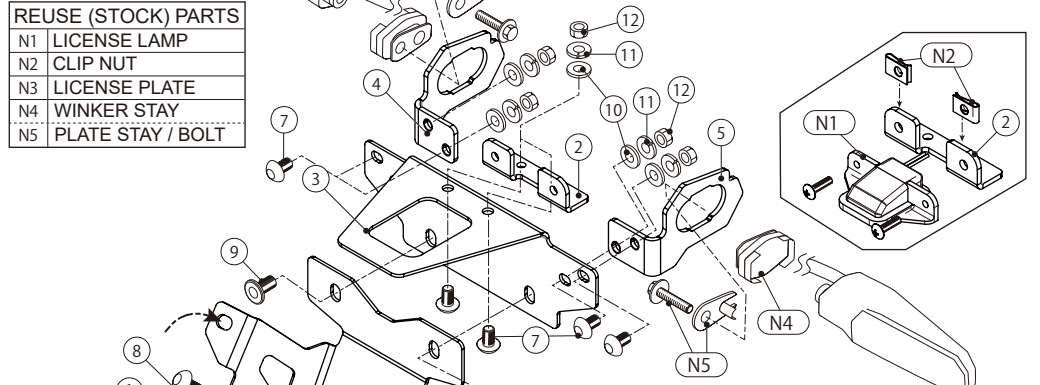
※Be careful of anti vibration rubber installing direction.

2-14 Tighten license plate and reflector stay together to license plate holder. Attach reflector to stay for finish installation.



FENDER LESS KIT NET DRAWING

REUSE (STOCK) PARTS	
N1	LICENSE LAMP
N2	CLIP NUT
N3	LICENSE PLATE
N4	WINKER STAY
N5	PLATE STAY / BOLT



PACKING LIST

FIGURE	NAME	QTY
1	LICENSE PLATE HOLDER	x1
2	LICENSE LAMP STAY	x1
3	WINKER BASE PLATE	x1
4	WINKER STAY	L x1
5		R x1
6	ANTI VIBRATION RUBBER (LICENSE PLATE)	x2
7	BUTTON CAP BOLT	M5x12 x6
8	BUTTON CAP BOLT	M6x12 x2
9	FLAT BUTTON CAP BOLT	M6x15 x2
10	WASHER	5x12x0.8 x6
11	SPRING WASHER	5mm x6
12	NUT	5mm x6
13	FLANGE LOCK NUT	6mm x1
14	REFLECTOR KIT	(126cc ~) x1

※Installation process is ADV150 (KF38), it is different stock parts of 160 (KF54). Please refer to the service manual.