



POWER PACK 125 type1/2 NEWLY RELEASED!!



12PS OR MORE WITH HIGH COMPRESSION 125cc!!

GROM (JC61)



POWER PACK 125 type1/2

Complete KIT with high-compression piston, high camshaft, and i-map to control fuel injection. A separate muffler replacement is required for stable performance.

APPLICATION

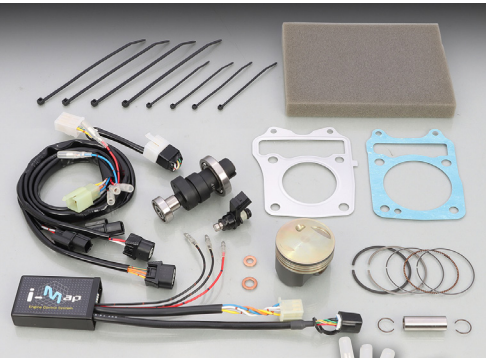
GROM (JC61) ※ JC75 NOT USABLE

REMARKS

- DISPLACEMENT : 125cc ○ BORE :  $\phi$  52.4 ○ PISTON : FORGING SPECIFICATION · MOLYBDENUM COAT FINISH ○ COMPRESSION RATIO : 12.2 : 1 (STOCK 9.3 : 1) ○ i-map (FI CONTROLLER) Ver.3 INCL. (SEE BELOW) ○ BIG CAPACITY INJECTOR K001 INCL.
- SUB HARNESS INCL. ○ URETHANE SPONGE INCL.
- STRAPPING BAND INCL. ○ NON-LEAD PREMIUM GASOLINE TYPE

HIGH CAM	CODE	PRICE
type1	230-1432000	¥44,000
type2	230-1432010	

- ※ Kitaco racing muffler (540-1432700) is installed on all the vehicle.
- ※ STOCK MUFFLER and STOCK CAMSHAFT cannot be used.
- ※ NO-DECOMP FUNCTION BUILT-IN
- ※ OIL COOLER KIT and CLUTCH COVER KIT are required for installation

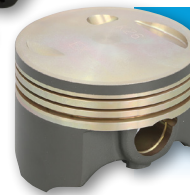
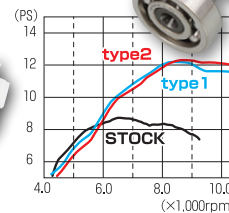


SUB HARNESS  
NO WIRING MODS  
REQUIRED!  
JUST INSERT THE  
COUPLER!



HIGH CAMSHAFT type 1/2

Type 1 has a thick mid-range torque characteristic, while Type 2 emphasizes a boost of power in the high-rpm range.



HIGH COMP PISTON

- BORE :  $\phi$  52.4
- PISTON : FORGING SPECIFICATION · MOLYBDENUM COAT FINISH
- COMPRESSION RATIO : 12.2 : 1 (STOCK 9.3 : 1)

Ver.3 i-map INSTALLATION MAP

MAP	DESCRIPTION	REV LIMIT
1	NO COMPENSATION	10,500rpm
2	HIGH COMP PISTON 125cc + HIGH CAM SHAFT TYPE 1 + UNI FILTER KIT	10,500rpm
3	HIGH COMP PISTON 125cc + HIGH CAM SHAFT TYPE 1 + UNI FILTER KIT + BIG CAPACITY INJECTOR K001 (x1.3)	10,500rpm
4	HIGH COMP PISTON 125cc + HIGH CAM SHAFT TYPE 2 + UNI FILTER KIT + BIG CAPACITY INJECTOR K001 (x1.3)	10,500rpm
5	LIGHT 164cc + HIGH CAM SHAFT TYPE 1 + UNI FILTER KIT + BIG CAPACITY INJECTOR K002 (x1.6)	10,500rpm
6	LIGHT 164cc + HIGH CAM SHAFT TYPE 2 + UNI FILTER KIT + BIG CAPACITY INJECTOR K002 (x1.6)	10,500rpm
7	LIGHT 164cc + HIGH CAM SHAFT TYPE 1 + $\phi$ 34 BIG THROTTLE KIT (403-1432000 · $\phi$ 21.5 / SUPER POWER CLEANER) + BIG CAPACITY INJECTOR K002 (x1.6)	10,500rpm
8	LIGHT 164cc + HIGH CAM SHAFT TYPE 2 + $\phi$ 34 BIG THROTTLE KIT (403-1432000 · $\phi$ 21.5 / SUPER POWER CLEANER) + BIG CAPACITY INJECTOR K002 (x1.6)	10,500rpm
9	LIGHT 181cc + HIGH CAM SHAFT TYPE 1 + UNI FILTER KIT + BIG CAPACITY INJECTOR K002 (x1.6)	10,500rpm
10	LIGHT 181cc + HIGH CAM SHAFT TYPE 2 + UNI FILTER KIT + BIG CAPACITY INJECTOR K002 (x1.6)	10,500rpm
11	LIGHT 181cc + HIGH CAM SHAFT TYPE 1 + $\phi$ 34 BIG THROTTLE KIT (403-1432000 · $\phi$ 21.5 / SUPER POWER CLEANER) + BIG CAPACITY INJECTOR K003 (x1.9)	10,500rpm
12	LIGHT 181cc + HIGH CAM SHAFT TYPE 2 + $\phi$ 34 BIG THROTTLE KIT (403-1432000 · $\phi$ 21.5 / SUPER POWER CLEANER) + BIG CAPACITY INJECTOR K003 (x1.9)	10,500rpm
13	NEO 164cc + $\phi$ 34 BIG THROTTLE KIT (403-1432100 · $\phi$ 28 / SUPER POWER CLEANER) + BIG CAPACITY INJECTOR K004 (x2.6)	11,000rpm
14	NEO 181cc + $\phi$ 34 BIG THROTTLE KIT (403-1432100 · $\phi$ 28 / SUPER POWER CLEANER) + BIG CAPACITY INJECTOR K004 (x2.6)	11,000rpm
15	DOHC 181cc + $\phi$ 34 BIG THROTTLE KIT (403-1432100 · $\phi$ 28 / SUPER POWER CLEANER) + BIG CAPACITY INJECTOR K004 (x2.6)	11,000rpm
16	USER ORIGINAL MAP	